



Key Texts

bird



reptile



- scales
- gills
- live in water
- cold-blooded



- young born in eggs
- cold-blooded
- lives in water and on land

mammal



- young born live
- warm-blooded
- fur

What animals eat

herbivore



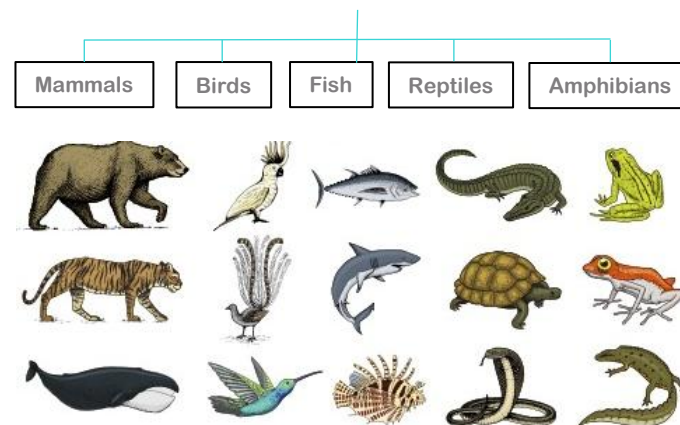
omnivore



carnivore



Animal Groups



Carnivores



Tiger



Cuttlefish



Platypus



Anteater



Shark



Lion

Herbivores



Rhinoceros



Deer



Parrot



Koala



Hippopotamus



Giraffe

Omnivores



Hedgehog



Boar



Skunk



Monkey



Kiwi



Bear



Knowledge Organiser: Everyday Materials Year 1

Careers connected to materials:
builder, construction worker,
material engineer



Key Vocabulary

material	anything that is used to make something else
fabric	a piece of cloth
wood	a material that comes from trees
plastic	a man made material that can be melted to change its shape
metal	a shiny and strong material that is found in the ground
property	a characteristic of something
opaque	not letting light pass through
transparent	see through

Natural objects



Man-made objects



Different Materials

Objects made from Materials



fabric



shirt



metal



bolts



wood



chair



plastic



bottle

Objects floating



Objects sinking



Objects that are flexible



Objects that are rigid



Opaque

Transparent





Knowledge
Organiser: Humans
Year 1

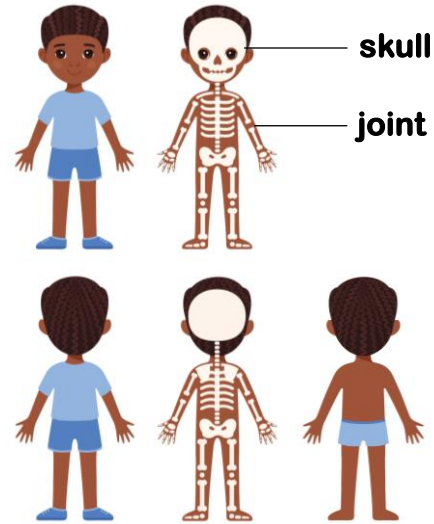
Careers connected to the human body:
doctor, nurse, massage therapist,
personal trainer, theatre technician



Key Vocabulary

head	the top part of a human or an animal's body
body	the whole of a human or animal, including the head, brain, heart, legs and arms
brain	the control centre of the body
pupil	the black spot in the middle of the eye that lets in light, colour and shapes
ear	the organs, or body parts, in humans and many other animals that allow them to hear
sound	vibrations, or sound waves, that we can hear
tongue	moving organ in the mouth that is used for talking, tasting, eating and licking
taste	the sense by which sweet, sour, bitter, or salty flavours are detected through taste buds in the tongue

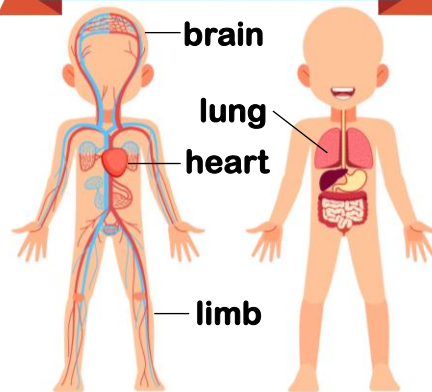
Human Skeleton



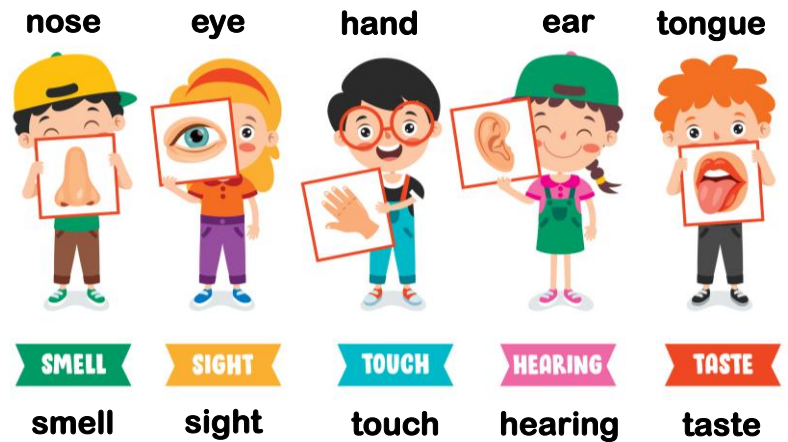
BODY PARTS



The Human Organs



5 SENSES





Knowledge Organiser:
Seasonal Changes
Year 1

Careers connected to materials:
meteorologist, weather
forecaster, climatologist



Key Vocabulary

one of 4 parts of the year; spring, summer, autumn and winter	
a season between March and May	
a season between June and August	
a season between September and November	
a season between December and February	
to sleep through the winter	hibernate
how warm or cool something is	temperature
the conditions and temperature outside	weather

Clothing to wear during each season

summer



spring



winter



autumn



Months which fall into each season



Seasons of the year



Months of the year





Knowledge
Organiser: Plants
Year 1

Careers connected to plants:
agronomist, botanist, farmer, gardener,
horticulturist, illustrator, landscaper



Key Vocabulary

seed	the small part of a plant which grows into a new plant
plant	a living thing that has roots, a stem or trunk and leaves
stem	part of a plant that supports a flower
petal	a leaf that forms part of a flower and is usually coloured
deciduous	trees that drop their leaves every year
evergreen	trees that keep their leaves all year round



wildflower
flowers that are
not planted by a
person



deciduous
trees that drop
their leaves
every year



evergreen
trees that keep
their leaves all
year round

Seeds grow into larger plants such as flowers, bushes and trees.

